

THE TRINITY RACERS CATALOG

INCLUDING SPEEDWORKS AND MAGIC MOTORSPORTS



Joel Magic Johnson

Wins

IFMAR

1/10th

On-Road

World

Championships

in Pomona



WORLD CHAMPION

NOVAK

TRINITY

IN THIS ISSUE

Trinity stock motors.....	2
Championship modifieds.....	2
Tri-Rotor modifieds.....	3
Armatures.....	3
Motor brushes.....	4
Motor accessories.....	5
Pushed batteries.....	7
Assembled batteries.....	7
Battery accessories.....	8
Ball bearings.....	9
Body accessories.....	10
Shocks.....	11
Tires.....	12
Tools.....	13
Speedworks motors.....	14
Magic bearings.....	16
Magic Gears.....	17



IFMAR 1/10th World Championship Edition



RC 2024 Slot Machine



RC 2099 Psychotic Reaction



RC 1784 Nitro, 8 Turn Single



RC 1776 Joel's Worlds Wind, 12 Turn 6 Wire

ROAR LEGAL STOCK MOTORS**RC 2024 The Slot Machine™**

The motor that shook up the stock class is still the leader. The Slot Machines technology has never been equaled nor has its winning record. Slotted armature design produces more power than standard full armature blank stock motors. This is the fastest motor that meets the latest ROAR '91 rules. 27 turns, 24 degrees of timing. 4.95 Wet magnets, 25,000 rpm's. \$28.00

NORRCA LEGAL STOCK MOTORS**RC 1000 Monster Stock Jr™**

NORRCA legal this 27 turn short stack slotted stock motor has 36° of timing to make it the fastest 27 turn stock motor. Fluorescent pink can and endbell. 4.95 Wet magnets. 27 turns, 36° timing, 26,100 rpm's. \$28.00

OUTLAW STOCK MOTORS**RC 2099 Psychotic Reaction™**

For sheer power in a "Pro Stock" motor with oilite bushings nothing comes close to "Psychotic Reaction". This Trinity motor features the latest 4.95 Wet magnets a high temperature composite endbell, factory set 10° timing and a machine wound 13 turn double armature. 35,000 rpm's. \$28.00

CHAMPIONSHIP SERIES MODIFIED MOTORS

The "Championship Series" modified motors are designed strictly for the hard core R/C racer. They are limited edition, high tech, hand built, tested and tuned pure bred racing motors. The winds are what our race team has been using for the past year to win countless regional and national titles as well as the 1992 IFMAR On-road World Championships.

We design our own motors from the ground up to assure you, the racer, the latest in high tech race winning equipment. We also prove it on the track.

When choosing a motor remember that the lower the number of turns the faster the motor, but the harder the drain on the batteries. Also that single, double, triple etc. is how many strands of wire is being used on each pole of the motor. The more strands, the more efficient the motor is, and the easier it is on the batteries.

To get a long run time use a high turn (16 or 17) motor. To get a lot of top speed use a low turn motor (10 or 11) turns. For more torque use the low turn motor with a small pinion gear.

X RC 1784 Nitro™ (8 turn single)

Designed for speed runs, drags or street racing where run time is of no consequence. Very fast, but

very hard on the batteries. 4.95 Wet magnets. 8 turn single, 16 awg, 56,000 rpm's. \$80.00

X RC 1785 Nuclear (9 turn single)

Drag race modified motor. Excellent for 6,7 and 8 cell operation. Also good for speed runs. Quick acceleration and lots of top end. 4.95 Wet magnets, 9 turn single, 16 awg, 55,000 rpm's. \$80.00

X RC 1786 Platinum™ (10 turn quad)

This new 10 turn modified motor features a quad wind which makes it excellent on high speed tracks. Works well on super speedways or for dirt oval racing on hard packed tracks. 4.95 Wet magnets, composite endbell, 10 turn quad 22 awg, 52,800 rpm's. \$80.00

X RC 1787 Pure Gold™ (11 turn quint)

Joel "Magic" Johnson won the '91, and '92 ROAR 1/10th On-Road National Championship running this type of wind. Features 4.95 Wet magnets, composite endbell, 11 turn quint 25 awg, 51,000 rpm's. \$80.00

X RC 1776 Joel's World Wind (12 turn, 6 wire)

This is the same motor as used by Joel Magic Johnson to win all 3 "A" mains and the title of IFMAR World Champion at the Ranch Pit Shop in Pomona California. Excellent motor for 1/10th on-road and 2wd off road cars, 4.95 Wet magnets, 12 turn 6 wire, 24 awg, 50,000 rpm's. \$80.00

RC 1779 Speed Metal™ (12 turn triple)

Jack Johnson used a Trinity 12 turn triple motor to turn the fastest time at the 1991 IFMAR 4wd Off Road World Championships. New multi wire wind produces lots of power and torque. Good power band for monster trucks, lots of torque. 4.95 Wet magnets, composite endbell, 12 turn multi wire triple., 20-21-22 awg, 49,600 rpm's. \$80.00

X RC 1788 Silver™ (13 turn quad)

An excellent modified motor for 4 minute racing. Very fast on a super speedway like the "Whip", and for off-road racing. 4.95 Wet magnets, composite endbell, 13 turn quad 22, 22, 23, 23 awg, 49,000 rpm's. \$80.00

RC 1781 The Buzz Saw™ (14 turn, double)

This new double wind is an excellent all around modified motor. If you only can afford one modified motor this should be your choice. Works equally well in off-road and on-road cars. 4.95 Wet magnets, composite endbell, 14 turn double 20.5-20.5 awg, 48,600 rpm's. \$80.00



RC 1789 Long Player
18 turn double



RC 3390 10 Turn Quad



RC 3090 10 Turn Quad Armature

RC 1782 Armageddon™ (15 turn quad)

This Trinity motor wind was chosen by Jack Johnson to use in his Jrx-T to win the 1991 ROAR Monster Truck Nationals. 4.95 Wet magnets, composite endbell, 15 turn quad 23 awg, 47,000 rpm's. \$80.00

RC 1783 The Classic™ (16 turn quint)

Good 2wd motor that can be run with 1400 SCR cells. This motor is easy on batteries and runs great on big fast tracks. Used by Joel Johnson to win the 1992 ROAR 1/12th Scale Nationals. Excellent 8 minute 6 cell motor. 4.95 Wet magnets, composite endbell, 16 turn quint 24 awg, 45,600 rpm's. \$80.00

X RC 1789 Long Player™ (18 turn double)

This is our longest running modified motor in terms of time. Very easy on the batteries, produces a lot of power with sport battery packs or 1400 mAh cells. This is a good modified for a racer with out pro-class cells. Easy to make run time, easy on brushes. 4.95 Wet magnets, composite endbell, 18 turn double 22 awg, 43,000 rpm's. \$80.00

TRI-ROTOR MODIFIED MOTORS

All the Tri-Rotor System modified motors feature the latest 4.9 Wet magnets, high rpm producing brushes, dual ball bearings and adjustable timing.

The Tri-Rotor winds tend to run like a standard blank with 1 less turn, but they have more torque. You must gear a 13 turn Tri-Rotor like a standard 12 turn motor.

RC 3300 9 Turn Single, \$80.00
(54,000 rpm's, 16 awg)

X RC 3390 10 Turn Quad, \$80.00
(53,000 rpm's, 22 awg)

X RC 3391 11 Turn Quint, \$80.00
(52,500 rpm's, 24 awg)

X RC 3392 12 Turn Triple, \$80.00
(51,000 rpm's, 21.5 awg)

RC 3339 13 Turn Quint, \$80.00
(49,000 rpm's, 25 awg)

RC 3304 14 Turn Double, \$80.00
(48,000 rpm's, 20.5 awg)

RC 3332 15 Turn 6 Wire, \$80.00
(46,700 rpm's, 25,25,26,26,26,26 awg)

RC 3330 16 Turn Quad, \$80.00
(46,000 rpm's, 24,24,24,23.5 awg)

RC 3333 17 Turn Triple, \$80.00
(45,100 rpm's, 23,23,23 awg)

ARMATURES

The Trinity Championship and Tri-Rotor armatures are designed to fit all Trinity and Speedworks motors along with the modified motors made by all the other manufacturers like Team Losi, Peak Performance and Reedy.

The armatures come in singles, doubles, triples and quads etc. This refers to the number of strands of wire used to wind the armature. The more strands used the more efficient the armature will be (easy on batteries). The less strands like a single, will have more punch, but will drain the batteries quicker.

The number of turns determines the rpm's of an armature. The less turns (10 turns), the more rpm's the armature will turn, but it will drain the batteries quickly. The more turns (13 turns) The smoother the power curve will be and the easier the armature will be on batteries.

ARMATURES, Drag & Pulling

These come with the commutators tied to eliminate commutator distortion. Works great with with Point Blank Cobalt magnets.

X RC 3080 8 Turn Single 16 awg, \$40.00

X RC 3081 9 Turn Single, 16 awg, \$40.00

X RC 3082 10 Turn Single 16 awg, \$40.00

ARMATURES, Championship Series

X RC 3084 8 Turn Single, 16 awg, \$30.00

X RC 3085 9 Turn Single, 16 awg, \$30.00

X RC 3086 10 T Single, 16.5 awg, \$30.00

RC 3043 11 T Single, 16.5 awg, \$30.00

RC 3044 12 T Single, 17 awg, \$30.00

RC 3070 13 T Single, 17 awg, \$30.00

RC 3013 10 T Dbl, 19-20 awg, \$30.00

RC 3022 12 T Dbl, 20-20 awg, \$30.00

RC 3009 14 T Dbl, 20.5-20.5, \$30.00

RC 3006 15 T Double, 21-20.5, \$30.00

RC 3095 18 T Double, 22 awg, \$30.00

RC 3047 10 T Triple, 21 awg, \$30.00

RC 3049 12 T Triple, 20-21-22, \$30.00

RC 3034 15 T Triple, 21-22-23, \$30.00

RC 3036 17 T Triple, 22-23-24, \$30.00

X RC 3090 10 T Quad, 22 awg, \$30.00

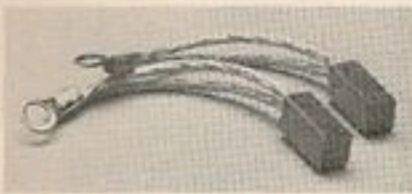
RC 3052 11 T Quad, 22 awg, \$30.00

RC 3053 12 T Quad, 22 awg, \$30.00

RC 3054 13 T Quad, 22-22-23-23, \$30.00

RC 3037 14 T Quad, 22-23-23-23, \$30.00

RC 3073 15 T Quad, 23 awg, \$30.00



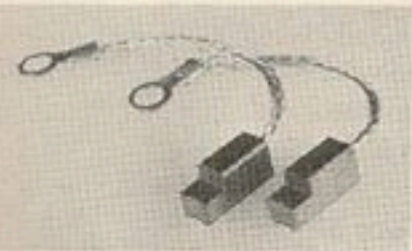
RC 4038 Full Hard Brush



RC 4038B Full Hard Brush, 10 pair



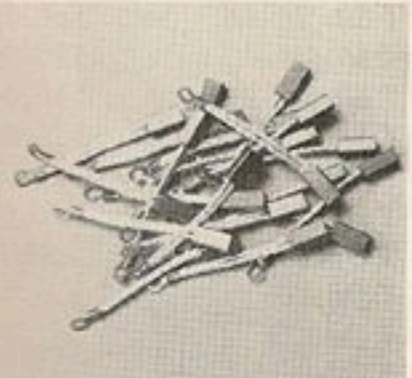
RC 4007 Timed Cut Brush (Medium)



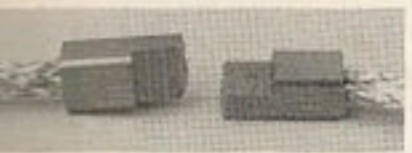
RC 4035 2/3's Height Cut Brush (Hard)



RC 4444 Sterling Silver Team Brush



RC4444B Sterling Silver Team Brush 10 pair



RC 4453 Sterling Silver Timed Brush

- X RC 3091 11 T Quint, 25 awg, \$30.00
- RC 3072 16 T Quint, 24 awg, \$30.00
- X RC 3083 12 T 6 Wire, 24 awg, \$30.00

TRI-ROTOR ARMATURES

- RC 3306 9 Turn Single, 6 awg, \$35.00
- X RC 3380 10 Turn Quad, 22 awg, \$35.00
- RC 3307 11 T Single, 16.5 awg, \$35.00
- X RC 3381 11 T Quint, 24 awg, \$35.00
- RC 3339 11 T 6 Wire, 4,4,5,5,5,5, \$35.00
- RC 3310 12 T Single, 17 awg, \$35.00
- RC 3312 12 T Triple, 21.5 awg, \$35.00
- RC 3313 13 T Single, 17.5 awg, \$35.00
- RC 3315 13 T Triple, 21.5 awg, \$35.00
- X RC 3382 13 T Quint, 25 awg, \$35.00
- RC 3340 13 T 6 Wire, 25 awg, \$35.00
- RC 3317 14 T Double, 20.5 awg, \$35.00
- X RC 3383 15 T 6 wire, 26 awg, \$35.00
- RC 3337 15 T Quint, 4,5,5,5,5, \$35.00
- RC 3334 16 T Quad, 4,4,4,4, \$35.00
- RC 3341 15 T 6 Wire, 5,5,6,6,6,6, \$35.00
- RC 3321 17 T Triple, 23 awg, \$35.00
- RC 3338 17 T Quint, 25 awg, \$35.00
- RC 3342 17 T 6 Wire, 6,6,6,6,6,6, \$35.00

MOTOR BRUSHES

Motor brushes and springs are the easiest ways to change the way your motor runs. Simply changing from a hard to a soft brush will increase rpm's and motor life. Lite motor springs give more rpm's while the heavier ones increase torque!

On brushes remember that a softer brush will produce more rpm's but will wear really fast. A hard brush will naturally last longer, stand up to heat better, produce more torque but wears the commutator quicker.

Cut brushes will also effect the way the motor runs. By cutting the face of the motor brush you can increase or decrease torque and rpm's, advance the timing on stock motors and or make a brush run cooler.

All Trinity brushes are designed in house, in fact most of the cut brush styles used by all the motor manufacturers today were originally designed by Trinity. All the brush compounds used in Trinity brushes are proprietary and are only available in the brushes that we have manufactured.

All our cut brushes have been molded, not ground to their shape so there is no breakage due to machining fractures. The shunts on Trinity brushes are molded into the brush material which is far superior in electrical contact to gluing or pressing in the shunts which is how they are done on some of the less expensive brands of brushes.

FULL BRUSHES

RC 4005 Stock Brushes and Springs (soft)

These brushes are a direct replacement for the brushes and springs that come in the stock Trinity and Speedworks and other brand motors. These are a soft compound that produce a lot of power, are easy on the commutator. We recommend changing them every 3 to 5 heats. Single silver shunts with terminals. \$3.99

RC 4038 Full Hard Brush (hard)

This hard brush produces slightly less rpm's than our soft brush, makes more torque and lasts longer. These brushes have dual silver shunts and terminals for screwdriver assembly. \$3.50

- X RC 4038B Full Hard Brush (10 pr) \$29.99

RC 4046 Full Soft Brush (soft)

This is our #4005 brush without the springs. Dual silver shunts with terminals. This brush is the easiest on the commutator (causing the least amount of wear). This brush will wear quickly and must be changed every few runs. \$3.50

- X RC 4046B Full Soft Brush (10 pr) \$29.99

RC 4065 Sportsman Brush (hard)

This is the same as part # RC 4038 but has only a single silver shunt and no terminal. \$1.99

- X RC 4065B Sportsman Brush (10 pr) \$16.99

CUT BRUSHES

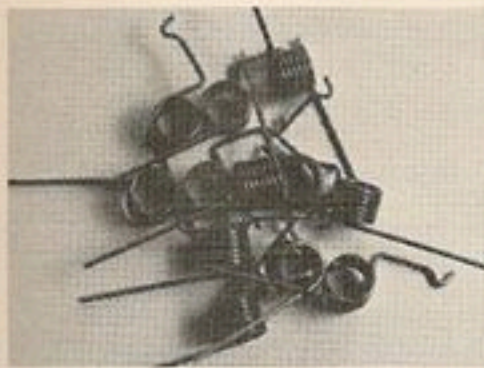
RC 4007 Timed Cut Brushes (medium)

The "Originals". Trinity invented the idea of cutting one side of a brush so that it increases the timing on stock motors. These brushes are a new medium compound that wears better than soft brushes but has more rpm's than a hard brush. There is about a 2 to 3 degree timing difference with timed brushes. By putting them in the standard way the timing is increased for more rpm's. If you put them in backwards the timing is decreased giving more battery life and more torque. Of course these should only be used in stock motors! These have dual silver shunts and terminals. \$4.79

- X RC 4007B Timed Cut Brushes (10 pr) \$39.99

RC 4035 2/3's Cut Brush (hard)

Next to our timed brush this is our most copied brush design. This is a full width brush but only 3/4's high. If you are looking for more punch put these brushes in with heavy springs RC 4033. Dual silver shunts with terminals. \$4.79



RC 4493 Extra Heavy Motor Springs, 6 pair



RC 4494 Stock Motor Tuning Kit



RC 4103 Slotted Dual Brush (Medium)



RC 4039 Brush Heatsinks
Purple Anodized

- X RC 4035B 2/3's Cut Brush (10 pr) \$39.99
- RC 4103 Slotted Dual Brush System (Med)
The unique slotted design helps to keep the contact area of the brush to commutator cooler. The medium compound works well on or off-road and with a rage of motor winds from 9 turns up. Dual silver shunts with terminals for easy installation. \$3.99
- X RC 4028S Medium Tension (1 pr.) \$2.39
- RC 4028 Medium Tension (6 pr.) \$12.00
- X RC 4033S Heavy Tension (1 pr.) \$2.39
- RC 4033 Heavy Tension (6 pr.) \$12.00
- X RC 4492 Extra Heavy (1 pr.) \$2.39
- X RC 4493 Extra Heavy (6 pr.) \$12.00

- X RC 4103B Slotted Dual Brush (10 pr) \$34.99

RC 4444 Sterling Silver Team Brush

This full size brush produces the most horsepower of any other brush on the market. Because of the silver content the commutator stays cleaner and does not burn at the commutator slots. \$5.99 pair

- X RC 4444B Silver Team Brush (10 pr) \$49.99

RC 4453 24° Silver Timed Brush

The Silver Timed brush gives about 2 degrees more timing to the motor but with its dual silver shunts and low resistance compound the speed increase is more like a 5 degree improvement over a standard copper/carbon/graphite motor brush. This brush is also designed to burn the commutator slots less which results in a longer lasting motor. \$5.99 pair

- X RC 4453B 24° Silver Timed (10 pr) \$49.99

- X RC 4490 Hard Compound Cavity Brush

This brush has the center removed to decrease drag and improve the contact area. More rpm's and the commutator stays cleaner. Less rocking in the brush hood then 1/2 height brushes. \$3.99

- X RC 4490B Hard Cavity Brush (10 pr) \$34.99

- X RC 4491 Silver Compound Cavity Brush

This brush has the center removed to decrease drag and improve the contact area. More rpm's and the commutator stays cleaner. Less rocking in the brush hood then 1/2 height brushes. \$5.99

- X RC 4491B Silver Cavity Brush (10 pr) \$49.99

MOTOR SPRINGS

Replacement Springs for all open endbell motors, Trinity, Speedworks, Yokomo, Air Supply etc. Use heavy springs on low turn motors and light springs on high turn motors.

- X RC 4032S Light Tension (1 pr.) \$2.39
- RC 4032 Light Tension (6 pr.) \$12.00

RC 4445 Spring Tuning Kit

Comes with a pair of light, medium and heavy springs for tuning your race motor. \$6.50

MOTOR ACCESSORIES

- X RC 4494 Stock Motor Tuning Kit

Everything you need to dial in your stock motor. Comes with Silver Cavity brushes, High Copper Hard brushes, 3 pairs of springs and instructions. A \$14.50 value! \$9.99

RC 4041 Wet Magnet Motor Can

Replacement motor can with the 4.95 Wet magnets. Comes with the ball bearing installed. \$20.00

RC 4016 Replacement End Bell

Replacement composite endbell as used on our modified motors. Comes with ball bearing, heatsinks and timing ring. \$19.99

RC 4018 Aluminum End Bell

Replacement aluminum endbell fits Trinity modified motors. Comes with ball bearing, heatsinks and timing ring. \$29.99

RC 4448 4.95 Wet Magnet Motor Setup

This is the latest 4.9 Wet magnet motor setup that we use on our modifieds. Everything is included to build up a motor except the armature. Composite endbell. \$49.99

RC 4027 Brass Motor Spacers

Brass motorspacers which work excellent for spacing your motor or as 1/8 axle spacers. \$2.25

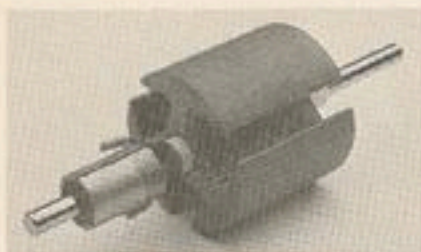
RC 4027B Brass Motor Spacers (100 pcs.) \$9.99

RC 4031 Class 7 Motor Bearing

Ultra high grade replacement motor ball bearing. \$7.50

RC 4039 Purple Brush Heat Sinks

Purple anodized brush heatsinks fit all open endbell motors. Comes with screw for attaching the brushes. \$2.99



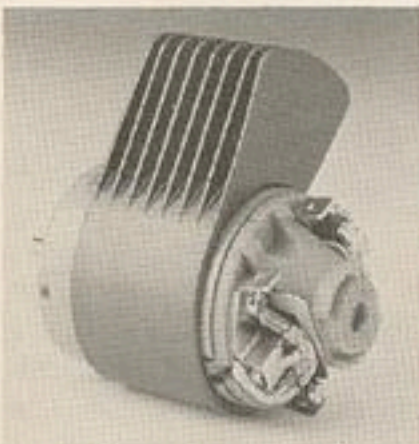
RC 4101 Armature Blank



RC4060
Comm
Cleaning
Stick



RC4061
Comm
Polishing
Stick



4452 Large Motor Heatsink



RC 4023 Motor
Doctor Spray

RC 4044 Motor Rebuild Kit

Includes new timing ring, screws and capacitor hooks. \$3.75

RC 4042 Replacement Oilite Bushings

One pair of replacement oilite bushings for stock motors. \$1.25

RC 4101 Armature Blank

Blank motor armature without wire on it for those who want to wind their own motor! \$14.95

RC 4454 Tri-Rotor Armature Blank

Same armature we use in our "Tri-Rotor" motor but without wire so that you can wind your own motor. \$15.95

RC 4102 Motor Sleeve

High density light weight iron sleeve that fits around the motor can to stop magnetic flux leakage. Used on the IEDA World Record setting stock and pro stock drag racing motors. \$4.99

RC 4012 Short Motor Mounting Screws

Short Allen head motor mounting screws that fit the "RC10", "Jrx-Pro", "Lynx II" etc. \$1.00 pair.

RC 4013 Long Motor Mounting Screws

Long Allen head motor mounting screws for the nylon "12L" pod etc. \$1.00 pair.

RC 4021 Motor Tube

Square plastic motor tube with foam inserts to protect your motor. \$2.25

RC 4043 Motor Spacer Heat Sink

Finned aluminum motor spacer that fits between the motor can and the motor pod. This helps dissipate heat away from the motor. \$7.99

RC 4044 Motor Rebuilding Kit

Contains a timing ring, timing ring screws and cap hooks. \$3.75

RC 4050 Commutator Cleaning Kit

Two grades of commutator sticks for quick in the field cleaning of the commutator of stock and modified motors. One stick is designed to clean and the other to polish. Comes complete with instructions. \$8.99

RC 4060 Commutator Cleaning Stick

Cleaning stick from #4050 only. \$4.75

RC 4061 Commutator Polishing Stick

Polishing stick from #4050 only. \$4.75

RC 4451 Small Aluminum Motor Heatsink

Small snap-on purple anodized motor heatsink fits on-road cars especially "10-12L". \$21.99

RC 4452 Large Motor Heatsink

Large purple anodized aluminum heatsink fits most off-road cars plus "TRC Lynx II". \$23.99

CAPACITORS

RC 4009 Disc Capacitors

(6 pc.) \$3.00 per card

RC 4010 Electrolytic Capacitors (6 pc.)

\$5.94 card

RC 4011 Capacitor Kit

Capacitors are necessary to prevent electrical noise from the motor brushes from interfering with your radio. Our kit comes with 2 disc and a electrolytic capacitor. \$1.89

RC 4450 High Frequency Capacitor kit

Today's generation of High Frequency Speed Controllers require a different capacitor kit to eliminate radio interference. 3 capacitors with instructions. Works with both high frequency and standard speed controls. \$1.99

MOTOR SPRAY AND MOTOR OILS

X RC 4023 Motor Doctor™ Cleaning Spray

This is the only motor cleaner that we recommend for cleaning "Trinity" and "Speedworks" stock and modified motors. Just remove brushes and spray out brush hoods and bearings to assure no build up of dirt in bearings or on commutator. All new stronger formula. \$5.99

RC 4024 Turbo Drops™

The original and still the best commutator drops on the market. Just a drop or two on the brushes of stock motors will give a noticeable increase in horsepower without an excessive amp draw. Use 1 drop on each brush before breaking in new brushes. \$4.59

RC 4025 Modified Motor Micro Oiler

High temperature oil designed especially for the ball bearings. \$3.49

RC 4026 Stock Motor Micro Oiler

Designed for oilite bushings. \$3.49

BATTERIES, Team Pushed™

The same battery packs used by Joel "Magic" Johnson to dominate the IFMAR 1/10th On-road World Championships are available to you! Our matching and processing equipment has evolved to

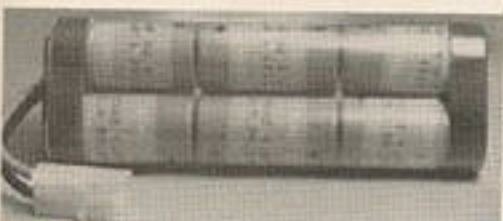
Batteries, Pushed



RC 5606 Pushed Sanyo 1700 SCRC, 6 Cell Pack



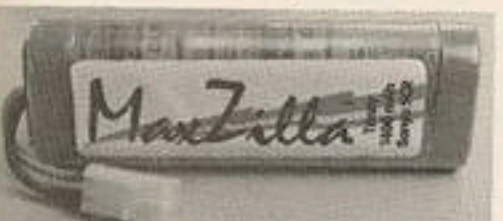
RC5774 Pushed Panasonic P-170 6 Cell Pack



RC 5778 Pushed and Assembled Panasonic P-170 SCR Pack With Connector



RC 5889 ZipPak, 1300 Sanyo SC 6 Cell Pack



RC 5054 MaxZilla, 1400 Sanyo SCR 6 Cell Pack



RC 5608 ProPak, 1700 Sanyo SCRC 6 Cell Pack



RC 5754 MaxZilla 2, 1400 Sanyo 7 Cell Pack



RC 5777 Power Link, Panasonic P-170 7 Cell

such a point that we can produce more "Killer" cells than any other matcher and we can offer them for sale.

All our Pushed cells are processed to eliminate any weak cells that could cause premature failure of your battery pack. We match all our cells after processing by capacity, average voltage and resistance. We produce all our matching data with a discharge down to .90 volts per cell. Don't be fooled by high numbers that have been produced by tampering with the discharge cut off voltage.

	Sanyo 1700 SCRC Cells (270 and up, 25 amp)	
X	RC 5614 4 Cell Team SCR/RC	\$56.99
X	RC 5616 6 Cell Team SCR/RC	\$84.99
X	RC 5617 7 Cell Team SCR/RC	\$99.99

	Sanyo 1400 SCR Cells (300 and up, 20 amp)	
	RC 5990 4 Cell Team 1400 SCR	\$53.99
	RC 5991 6 Cell Team 1400 SCR	\$79.99
	RC 5992 7 Cell Team 1400 SCR	\$93.99

	Panasonic P-170 SCR cells (355 and up, 20 amp)	
	RC 5996 4 Cell Team P-170 SCR	\$56.99
	RC 5997 6 Cell Team P-170 SCR	\$84.99
	RC 5998 7 Cell Team P-170 SCR	\$99.99

BATTERIES, Pushed™

Our standard Pushed cells are the same quality as our Team Pushed but have slightly lower numbers.

	Sanyo 1700 SCRC Cells (260 to 265, 25 amp)	
X	RC 5604 4 Cell 1700 SCRC	\$54.99
X	RC 5606 6 Cell 1700 SCRC	\$74.99
X	RC 5607 7 Cell 1700 SCRC	\$84.99

	Sanyo 1400SCR Cells (280 to 295, 20 amp)	
	RC 5555 4 Cell 1400 SCR	\$45.99
	RC 5556 6 Cell 1400 SCR	\$65.99
	RC 5557 7 Cell 1400 SCR	\$75.99

	Panasonic P-170 SCR cells (335 to 350)	
	RC 5773 4 Cell P-170 SCR	\$48.00
	RC 5774 6 Cell P-170 SCR	\$67.00
	RC 5775 7 Cell P-170 SCR	\$77.00

BATTERIES, Matched

All our matched battery packs are matched by capacity and run time to assure you the best matched batteries that you can buy. All batteries are unassembled. We recommend using "1400 SCR" cells for stock motors and "1700 SCR" cells for modified motors. The "1400" cells will put out more voltage but will discharge quicker

Batteries Assembled

which is exactly what you need for stock class racing. "1700" cells have a higher capacity output and run a lot longer which is what you need for modified motors.

	Sanyo 1700 SCRC	
X	RC 5600 4 Cell 1700 SCRC	\$42.99
X	RC 5601 6 Cell 1700 SCRC	\$61.99
X	RC 5602 7 Cell 1700 SCRC	\$70.99

	Sanyo 1400 SCR	
	RC 5084 4 Cell 1400 SCR	\$30.00
	RC 5085 6 Cell 1400 SCR	\$45.00
	RC 5086 7 Cell 1400 SCR	\$52.50

	Panasonic P-170 SCR	
	RC 5770 4 Cell 1700 P-170	\$38.00
	RC 5771 6 Cell 1700 P-170	\$57.00
	RC 5772 7 Cell 1700 P-170	\$66.50

BATTERIES, Pushed and assembled

Same as Trinity Pushed packs, but assembled into 6 cell sticks with clear shrink so that the spec. stickers are visible. Comes with battery connectors. These are in the same capacity range as our Pushed cells.

	RC 5507 6 Cell Sanyo 1400 SCR	\$73.49
	RC 5612 6 Cell Sanyo 1700 SCRC	\$83.50
	RC 5778 6 Cell Panasonic P-170 Pack	\$74.50

BATTERIES, Assembled packs

Assembled battery packs in Trinity packaging.

	6 Cell Sticks	
	RC 5889 ZipPak™ Sanyo 1300 SC	\$19.99
	RC 5054 MaxZilla™ Sanyo 1400 SCR	\$39.99
	RC 5608 Pro Pak™ Sanyo 1700 SCRC	\$49.99
	RC 5776 Power Link™ Panasonic P-170	\$45.00

	7 Cell Flat Packs, Fits Kyosho cars, planes, etc.	
	RC 5894 ZipPak™ Sanyo 1300 SC	\$24.99
	RC 5754 MaxZilla 2™ Sanyo 1400 SCR	\$49.99
	RC 5777 Power Link™ Panasonic P-170	\$52.50
	RC 5610 ProPak™ Sanyo 1700 SCRC	\$59.99



RC5900 Battery Equalizer and Discharger



RC 5611 ProPak Sanyo 1700 SCRC 7 Cell Hump



RC 5760 9.6 Volt Tyco Style Pack



RC 5093 5 Cell Receiver Pack With Novak Plug



RC 5788 Sanyo 1700 SCRC Cells Single or Cases

7 Cell Hump Packs, Fits RC10, JRX etc.

RC 5895 ZipPak™ Sanyo 1300 SC \$24.99

RC 5762 Mega Speed Sanyo 1400 SCR \$49.99

RC 5779 Power Link™ Panasonic P-170 \$52.50

RC 5611 ProPak™ Sanyo 1700 SCRC \$59.99

6 Cell LTO Packs, 6 cells side x side for oval track cars.

X RC 58890 ZipPak™ Sanyo 1300 SC \$19.99

X RC 50540 MaxZilla™ Sanyo 1400 SCR \$39.99

X RC 57760 Power Link™ Panasonic P-170 \$45.00

X RC 56080 ProPak™ Sanyo 1700 SCRC \$49.99

7 Cell LTO Packs, 7 cells side x side for oval track cars

X RC 58950 ZipPak™ Sanyo 1300 SC \$24.99

X RC 57540 MaxZilla™ Sanyo 1400SCR \$49.99

X RC 57770 Power Link™ Panasonic P-170 \$52.50

X RC 56100 ProPak™ Sanyo 1700 SCRC \$59.99

BATTERIES, Receiver packs

X RC 5093 5 Cell Novak Plug (50 AA) \$33.95

RC 5880 4 Cell Sq. W/J (600 AA) \$19.99

RC 5881 4 Cell Flat W/J (600 AA) \$19.99

RC 5888 5 Cell Sq. W/J (600 AA) \$24.99

BATTERIES, Tyco, Nikko R/C cars

RC 5760 8 Cell Turbo Pack \$27.99

BATTERIES, Unassembled cells

RC 5029 Sanyo AA cells 600mAh (20 pieces in sealed box) \$3.50 ea.

RC 5048 Sanyo AA 600 Transmitter cells (8 pieces in header card) \$18.99

RC 5042 Sanyo SCR 3/4 Cells 1000mAh (20 pieces in sealed box) \$8.50 ea.

RC5065 Sanyo KR-1300 Cells 1300 mAh (20 pieces in sealed box) \$7.00 ea.

RC 5090 Sanyo 4400mAh D cells (6 pieces in sealed box) \$10.99 ea.

RC 5095 Sanyo SCR 1400 Single Cells (20 pieces in sealed box) \$9.00 ea.

RC 5096 Sanyo AAA Receiver Cells (20 pieces in sealed box) \$4.99 ea.

RC 5780 P-170 SCR Panasonic Cells (20 pieces in sealed box) \$9.00 ea.

X RC 5788 Sanyo SCRC 1700 Single Cells (20 pieces in sealed box) \$9.00 ea.

BATTERY, Accessories

RC 5003 Battery Shunts

Battery shunts to solder your battery packs together. Pure copper and silver plated for easy soldering. \$2.25

RC 5004 Rosin Soldering Flux \$3.99

RC 5012 30 Ohm Discharge Resistors \$1.69

RC 5018 Solder

This is the best solder for packs. \$4.99

RC 5019 Assorted Tie Wrap Kit \$2.49

RC 5026 Amps Motor Connector

One pair of 2 pin amps connectors. These match the motor plugs on "Associated RC10's". \$1.49 pair

RC 5101 Battery Washers

Nylon insulating washers that go over the positive ends of the batteries to insulate shorting of battery bars. \$2.00

X RC 5102 Stick Pack Building Kit

Comes with shot gun battery tube, end-caps, shrink tubing wire connector and tabbing material to make your own stick packs. Instructions included. \$4.99

X RC 5104 Saddle Pack Building Kit

All the necessary ingredients to build a side by side saddle battery pack. Comes with CU 64 battery bars, battery washers, 13 awg wire, clear single cell shrink and instructions. \$6.99

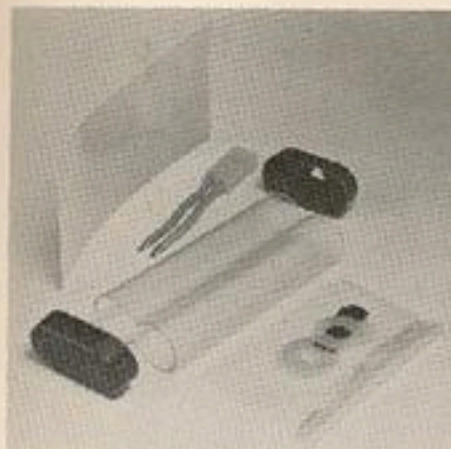
X RC 5105 CU 64 Battery Bars

Super heavy pure copper battery bars. Lowest resistance and bent to fit the battery pack perfectly. Thicker than standard gold bars to carry more current. The correct shape, fits the cell ends flat so that you get a good big flat surface to solder the bar to your battery, 8 pieces, \$4.99

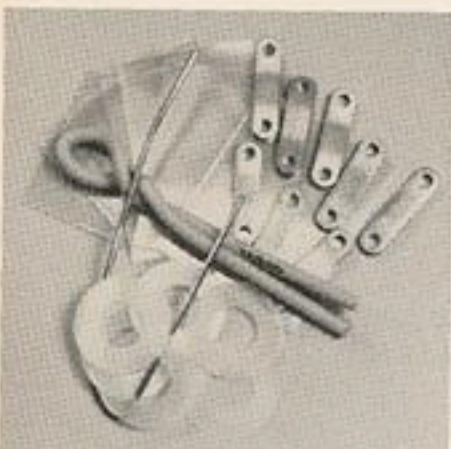
X RC 5106 CU 64 Battery Bars Bulk (25 pieces) \$11.50

RC 5565 Battery Pack End Caps

Purple plastic end caps to use when you make 6 cell stick packs. Designed so that the wire comes up from the top so it better fits the RC10 and JrX-Pro. 5 pairs for 3.99



RC 5102 Stkk Battery Pack Building Kit



RC 5104 Saddle Battery Pack Building Kit



RC 5105 CU 64 Pure Copper Battery Bars



RC 7869 Associated 10L/12L Ball Bearing Set

X RC 5900 Battery Equalizer & Discharger

The best way to discharge your saddle packs, 4, 6, or 7 cells. Individually discharges each cell by its self to eliminate cell reversal. Requires assembly. \$32.50

PLUGS & CONNECTORS

RC 5026 Amps Motor Connector

One pair of 2 pin amps connectors. These match the motor plugs on "Associated RC10's". \$1.49 pair

RC 7014 Tamiya Type Plug W/Resistor

For you racers that use "Tamiya" plugs we have one of our 30 ohm discharge resistors connected to a "Tamiya" plug. Just plug into your battery pack after running and leave plugged in overnight. \$2.75

RC 6020 Tamiya Connector W/Wires \$3.99

RC 7011 Tamiya Plugs W/out Wire \$2.69

RC 5072 Security System Power Plugs

New and improved locking power plugs designed to stay together under the rough conditions encountered in off-road racing. These cannot be plugged in backwards like other plugs. Very low resistance. \$2.99

RC 5074 No Solder Leads W/Connectors

These connectors slip right on the tabs where you used to have to solder your motor lead wires. The other end has "Tamiya" style bullet connectors \$3.50

RC 5080 No Solder Leads W/Bare End

The same as above only without the bullet connectors. \$2.99

RC 7094 2 Pin Amps Plug W/ Wires \$3.69

RC 5041 Futaba J Plug With Wire \$5.25

RC 5060 KO Plug With Wire \$5.25

SHRINK WRAP

For Single Cells

RC 5075 Clear Precut 1.5" (20 pcs) \$1.99

X RC 5166 Clear Precut 1.5" (100 pcs) \$3.89

For 6 Cell Stick Packs

X RC 5167 Clear Precut 2.5" (6 pcs) \$2.25

X RC 5168 Clear Precut 2.5" (25 pcs) \$5.99

X RC 5171 Pink Precut 2.5" (6 pcs) \$4.25

X RC 5172 Pink Precut 2.5" (25 pcs) \$6.99

For Side x Side or 7 Cell Flat Packs

X RC 5173 Clear Precut 3" (6 pcs) \$2.35

X RC 5174 Clear Precut 3" (25 pcs) \$6.50

For 7 Cell Hump Packs

X RC 5169 Clear Precut 3.5" (6 pcs) \$2.45

X RC 5170 Clear Precut 3.5" (25 pcs) \$6.75

HOOK UP WIRE

X RC 5000 ProCable Hook Up Wire Pink and Green (13awg, 2') \$4.99

X RC 5001 ProCable Hook Up Wire Pink and Green (13awg, 10') \$18.99

X RC 5140 ProCable Hook Up Wire Red and Black (14awg, 2') \$3.99

X RC 5141 ProCable Hook Up Wire Red and Black (14awg, 10') \$15.16

X RC 5160 ProCable Hook Up Wire Red and Black (16awg, 2') \$1.99

X RC 5161 ProCable Hook Up Wire Red and Black (16awg, 10') \$7.59

ANTENNAS

RC 6010 Fiberglass Roll Over Antenna \$5.00

RC 7040 Flexi Vertical Mount Antenna \$1.59

RC 7041 Antenna Tips (10 pieces) \$0.99

BALL BEARINGS, Pairs

All Trinity Ball Bearings are made of the highest grade stainless steel to prevent rusting and provide a long life. Beware of low priced chrome bearings which rust almost immediately.

RC 6031 1/8 x 5/16, Fr. Wheel Bearings Fits the front wheels of 1/12th scale cars, or older "TRC" front axles. \$13.50 a pair.

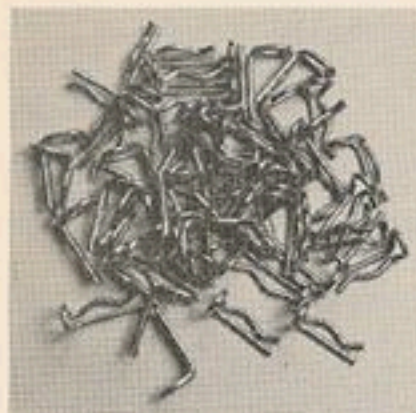
RC 6033 1/4 x 3/8F, Rear Axle Bearings Fits rear axles on all 1/10th on road cars, RC10 rear axles and most ball bearing steering kits. \$14.50 a pair.

RC 7018 5 x 11mm Metric Bearings Tamiya cars. \$8.00 a pair

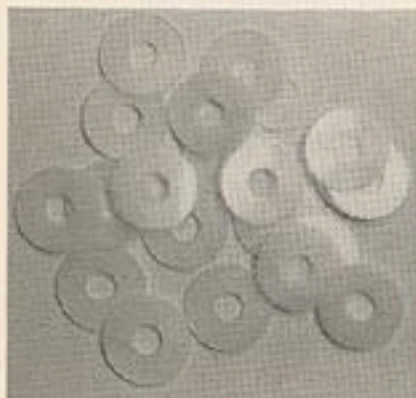
RC 7051 RC10 Front Wheel Ball Bearings "RC10" front wheel bearings (6010 kit). \$14.00

BALL BEARINGS, Sets

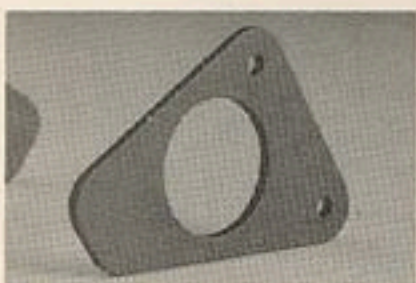
RC 7019 RC10 Ball Bearing Set This bearing set fits the "Associated RC10" (6010). \$79.95



RC 6002B Bent Up Body Clips, 25 pieces



RC 6003 Nylon Body Mounting Hole Washers



RC 5210 Purple 10LSS Nerf Wings



RC 0110 Super Differential Balls (16 Pieces)

RC 7099 Championship RC10 Bearing Set

This bearing set has the new larger front wheel ball bearings that come in the "Championship Edition RC10" and fit the new "Assoc." 3 piece front wheels. \$79.95

RC 7080 Blkfoot/Beetle Bearing Set \$28.99

RC 7084 Clod Buster Bearing Set \$70.99

RC 7085 Ultima Bearing Set \$40.99

RC 7098 On-Road Ball Bearing Set \$31.99
Fits 1/12th scale cars, "Bolink", "12L".

✕ RC 7860 Assoc. Team Car Bearing Set \$69.95

✕ RC 7861 RC10T Truck Bearing Set \$69.95

✕ RC 7862 Stealth Trans Bearing Set \$49.95

✕ RC 7863 Losi Bearing Set (all cars) \$49.95

✕ RC 7864 Team Losi LXT, Bearing Set \$64.99

✕ RC 7865 Traxxas Bullet/Sledgehammer Bearing Set \$25.99

✕ RC 7866 Kyosho Lazer Bearing Set \$39.99

✕ RC 7867 Kyosho Lazer Hop Up Bearing Kit
Has bearings for the idler gears, slipper clutch etc. \$42.99

✕ RC 7868 Kyosho Turbo Burns, Burns DX Bearing Set \$59.99

✕ RC 7869 Assoc. 10/12L Bearing Set \$31.99

✕ RC 7889 Bolink LTO, Gold Bearing \$32.99

RC 7898 1/10th On-Road Bearing Set
Fits "TRCLYNX II" and "10L", designed for larger 3/16" front axles that these cars now use. \$32.99

RC 7899 Losi Jr-2/Jr-T Bearing Set \$29.95

BODY ACCESSORIES

RC 6002 Bent Up Gold Body Clips

Extra thick body clips with the ends bent. (5 pieces). \$1.49

✕ RC 6002B Bent Up Gold Body Clips
(Bulk 25 pcs). \$6.25

RC 6003 Nylon Body Hole Washers

Use washers between the body and body clips to protect your RC car body. These washers will keep the clips from ripping through the body when you crash. \$1.25

RC 6008 Purple Aluminum Wing Buttons

"Trinity" wing buttons are an aluminum stepped design that makes them super light. They have the set screws running through the top so you can adjust the wing while it is already on the car. \$3.50

RC 7079 Shock Tower Wing Mounts

These purple anodized machined aluminum horizontal wing mounts are designed to fit the shock towers of most off road cars. \$5.50

BUMPERS

✕ RC 5210 10L Nerf Wings

Purple anodized purple aluminum nerf wings for the Associated 10L and 10LSS. \$5.99

RC 7026 Black Kydex Bumper Blank
3 1/2 x 11', \$6.99

RC 7028 Wide RC10 Front Bumper \$6.99

RC 7111 Jrx-Pro Wide Front Bumper \$7.99

RC 7112 Jrx-Pro Nerf Wings \$7.99

DIFFERENTIAL PARTS

RC 0110 Super Differential Balls (16 pcs)

Grade 10 precision diff balls accurately sized to insure a better working diff. \$1.99

✕ RC 0110B Super Differential Balls (100 pcs)
Same as above but 100 pieces. \$9.99

RC 0114 Differential Rings

3 pairs of differential rings for RC10, and all American made road race cars. \$2.50

LINKAGE

All linkage kits use Trinity's heim joints, stainless steel screws and threaded rod.

RC 7052 Complete RC10 Linkage Kit \$23.00

RC 7121 BlackFoot Steering Linkage \$7.75

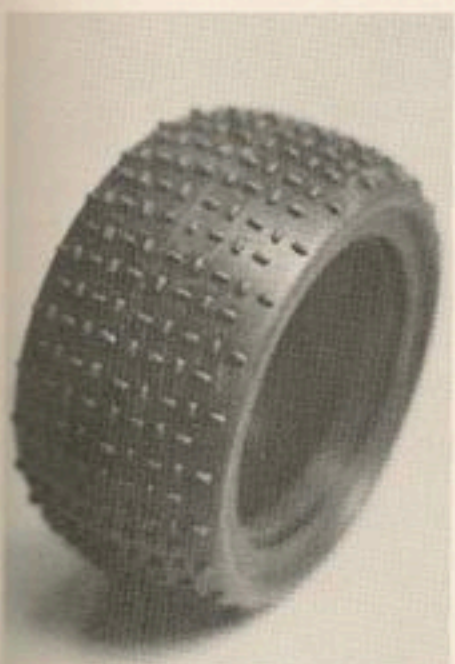
RC 7031 12' 4-40 Threaded Rod (2 pc.)
\$1.79



RC 7133 Power Plus Rear Shock System



RC 7160 FXT Tamiya Blitzer Shock Set



RC 7911 2.2" Mini Dash Pattern

RC 7032 Universal Linkage Kit

Comes with an assortment of threaded rod, heim joints and screws to make your own linkage kits. \$7.49

RC 7033 2-56 Heim Joints (pr.) \$1.99

RC 7048 4-40 Heavy Duty Heim Joints \$2.50

LUBRICANTS, Silicone**RC 6009 Silicone In Squeeze Bottle**

Thick silicone for use on front steering blocks, damper washers etc. \$3.50

RC 0292 Silicone Diff Lube

Extremely slippery differential lube that will not break down under use. Also good for use on damper washers and friction shocks \$5.99

SCREWS

RC 0111 Pinion 4-40 Set Screws (10) \$2.25

RC 7064 RC10 Locking Diff Nuts \$0.99

RC 7034 2-56 Screw Assortment \$1.69

RC 7053 4-40 Screw Assortment \$1.99

SERVO SAVERS

RC 6037 Servo Saver, Futaba \$3.49

RC 6038 Servo Saver, Novak \$3.49

RC 6039 Servo Saver For KO \$3.49

SERVO TAPE

RC 6000 Narrow Servo Tape, 3/4" \$3.29

RC 6001 Wide Servo Tape, 1 1/2" \$3.79

SHOCKS, RC10 rebuild parts

RC 7038 Shock End Cap Seals \$1.75
"O" ring type, silicone

RC 7039 Silicone Shaft Seals \$2.00

SHOCKS, Power Plus sets**RC 7196 BlackFoot Front Shocks**

Green anodized, with bladders to prevent foaming. Comes with assorted tension springs. \$25.99 pr.

RC 7197 Black Foot Rear Shocks

Same as above but for the rear. \$25.99 pr.

RC 7198 Clod Buster Shock Set

4 shocks for the Clodbuster, gold anodized, these fit either the front or rear. 2 packages are needed to do the whole car. \$49.99 2 pr.

RC 7132 Power Plus Front Shock System

Fits all popular cars like the RC10, Jrx-Pro and TRC Lynx II. Purple anodized. \$25.99 pr.

RC 7133 Power Plus Rear Shock System

Same as above but longer. \$25.99 pr.

RC 7160 FXT/Tamiya Blitzer Shocks

Purple anodized shocks for the Futaba FXT or the Tamiya Stadium Blitzer. Fits front or rear. \$25.99 pr.

SHOCKS, Power Plus parts**RC 7134 Front Shock Shaft**

Fits 7132. \$3.59

RC 7135 Rear Shock Shaft

Fits RC 7133, \$3.59

RC 7136 End Caps

Fits all Trinity Shocks, \$5.95

RC 7137 Spring Clamps And Holders \$5.95**RC 7138 Shock Rebuild Kit (All Trinity) \$9.99****RC 7139 Blackfoot Shaft W/Piston**
Fits 7196 or 7197, \$3.59**RC 7140 Clod Buster Shaft W/ Piston**
Fits 7198, \$3.59**TIRES, 2.2" Off-road**

If you think we are serious about our motors wait until you try Trinity 2", 2.2" and Baja tires.

The 2.2's have several advantages over a standard wheel and tire set-up. The obvious difference is the overall diameter of the tire. The bigger the diameter, the more spikes per inch are in contact with the track surface as the tire rotates. Also a larger tire tends to change direction slower, so once your car is going straight it tends to want to run nice and straight. This is really important on a bumpy track.

Over the jumps and bumps the 2.2's are more stable and land better off the jumps. The lower profile tire tends to bounce less, letting the

suspension compress like it is suppose to instead of the tire. This way the tire is ready to dig in as soon as the car lands, not after it stops bouncing. A little thing that makes a big difference throughout the course of a race. In off-road racing, every time you land over a jump and can gain a couple of inches over the competition, this will make difference of feet at the end of a 4 minute race.

Once you try 2.2's you will never run a regular tire again!

Rear 2.2" Tires (Natural Rubber)

- RC 7421 Standard Spike (soft) \$9.99
- RC 7422 Standard Spike (hard) \$9.99
- RC 7410 Cut Spike (hard) \$9.99
- RC 7411 Cut Spike (soft) \$9.99
- RC 7412 Mini Spike (hard) \$9.99
- RC 7436 Triad (hard) \$9.99
- RC 7911 Dash Pattern (P rubber) \$9.99

Rear 2.2" Wheels

- RC 7414 RC10 Rear (white) \$6.99
- RC 7415 RC10 Rear (pink) \$6.99
- RC 7416 Kyosho Rear (white) \$6.99
- RC 7441 Yokomo Rear (white) \$6.99

Front 2.2" Tires (Natural Rubber)

- RC 7424 Cut Spikes (hard) \$9.99
- RC 7425 Mini Spikes (soft) \$9.99
- RC 7426 Mini Spikes (hard) \$9.99

Front 2.2" Wheels

- RC 7429 White Front Wheels \$6.99
- RC 7431 Pink Front Wheels \$6.99

All 4 above fit the RC10, Kyosho 2wd, and Losi cars with enclosed bearing adaptors.

TRUCK TIRES, Baja Off-road

Trinity Baja™ tires fit all racing truck rims.

- RC 7500 4 Rib Front Tire \$16.99
- RC 7501 Standard Spike Tire \$16.99
- RC 7502 Cut Spike Tire \$16.99
- RC 7503 Mini Spike Tire \$16.99
- RC 7504 Triad Pattern Tire \$16.99
- X RC 7912 Dash Pattern Truck Tire \$16.99

Truck Wheels For Baja Tires, Purple Chrome

- RC 7700 Blackfoot Front Rims \$9.99
- RC 7702 Blackfoot Rear Rims \$9.99
- RC 7705 Jrx-Pro Rear Rims \$9.99
- RC 7706 RC10 Rear Rims \$9.99
- RC 7707 Jrx-Pro, RC10, Front Rims \$9.99

Fits all three with the use of adaptors included in the package.

- X RC 7987 RC10T Rear Rims \$9.99
- X RC 7989 RC10T Front Rims \$9.99

TIRES, Truck On-road Foam

Trued And Mounted Foam Truck Tires, Long Wear "Magic" Rubber.

- X RC 7980 Blackfoot Front Tires \$25.99
 - X RC 7981 Blackfoot Rear Tires \$25.99
 - X RC 7982 RC10 Rear Tires \$25.99
 - X RC 7983 JRX-Pro-T Rear Tires \$25.99
 - X RC 7984 RC10, JRX Front Tires \$25.99
- Fits both with the use of spacers
- X RC 7986 RC10T Rear Tires \$25.99
 - X RC 7988 RC10T Front Tires \$25.99

X RC 7999 Replacement Foam Donuts

Pre-trued Magic Rubber \$19.99

Tires, 1/10-12th Foam Donuts

RC 6090 1/12th Magic Yokomo Fronts

This is that famous long lasting super traction rubber. Works very well on asphalt giving more traction then greens. Does not bog down on carpet. It allows the car to carry more speed thorough the corners. Untrued. \$10.00

- RC 6091 1/12th Yokomo Rears \$10.00
- RC 6092 1/10th Yokomo Fronts \$15.00
- RC 6093 1/10th Yokomo Rears \$15.00

Wheels, 2" Off-road

3 Piece Modular Wheels, Purple Chrome

- RC 7900 2" RC10 Rear Wheel \$5.99
- RC 7901 2" JRX-Pro Rear Wheel \$5.99
- RC 7902 2" Ultima Rear Wheel \$5.99
- RC 7903 2.1" RC10, JRX-Pro, Kyo, Front

Fits all 3 with enclosed adaptors. \$5.99

TIRE TRACTION

X RC 6677 ProStik

The most popular tire traction for foam tires. Used by Joel Johnson and Tyree Philips to finish 1st and 2nd at the IFMAR World Championships. New formula for the latest generation of foam tires utilizing more natural rubber. Special slow drying formula keeps tires from losing traction halfway through a heat. Good for indoor and outdoor use. \$6.99

X RC 6678 ProStik Quart Refill \$46.00

RC 6016 Magic Bite™ Outdoor Traction Red Dot. Super sticky tire traction for asphalt use. \$6.75

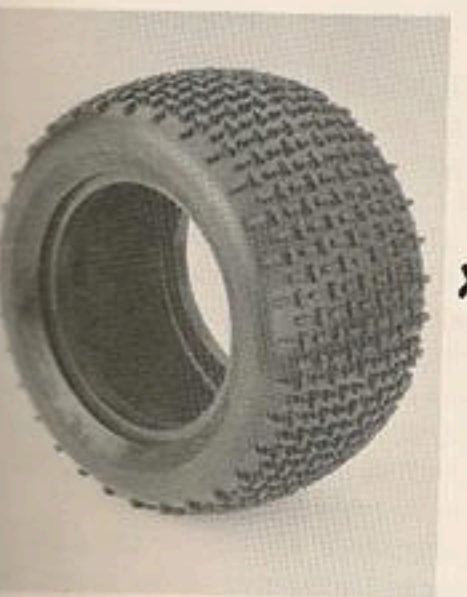
RC 6017 Refill of Red Dot Traction (Qt) \$44.00



RC 6677 ProStik Super Foam Tire Traction



RC 6666 Nuclear Waste Foam Tire Traction



RC 7912 Dash Pattern Racing Truck Tire



RC 8810 Body Mounting Hole Punch



RC 8812 Tamiya Amps Pin Remover



RC 8811 Bearing Setter



RC 7800 The Tool, 2 Sided Allen Wrench



RC 9033 Slot Machine T Shirt

RC 6666 Nuclear Waste™

Super sticky rubber conditioner and traction compound for capped and radial tires on concrete tracks. Makes those starts off the line much easier. Lasts longer than other brands. \$6.99

RC 6667 More Nuclear Waste (Qt.) \$46.00

SUSPENSION PARTS

RC 7170 Heavy Duty Black Kyosho Laser Front Arms \$6.95

RC 7171 Heavy Duty Black Kyosho Laser Rear Arms \$6.95

TOOLS

RC 6018 Wire Cleaning Brush

This steel bristle wire brush is excellent for cleaning dirt from off-road car tires and it is also excellent for cleaning up solder joints on anything from battery packs to slot car chassis. \$3.99

RC 7750 Digital Caliper

6" Precision machined digital caliper. Super accurate mechanism made of stainless steel. \$149.99

X RC 8810 Body Post Mounting Hole Punch

One of the hardest part about mounting a lexan body is to get nice clean round holes for the antenna and body posts. The "Body Punch" will punch a perfect hole in the body every time! \$9.99

X RC 8811 Bearing Setter

This is a handy tool to have if you do work on your own motors. This tool is designed to remove and install ball bearings and bushings without ruining them. The bearings are gently pressed in, which unlike hammering them in, causes absolutely no damage to delicate ball bearings. \$14.99

X RC 8812 Tamiya-Amps Plug Pin Remover

This clever tool lets you remove the pins from "Tamiya" and "Amps" plugs without ruining either the metal pins or plastic housing. If you use either of these plugs for your motor or battery connections this tool is a necessity. \$11.99

TOOLS, Pro Drill Blank Wrenches

All our Allen wrenches have anodized machined aluminum handles and user replaceable precision ground tips made out of drill blanks. These tips will not strip!

RC 7055 .035 "Assoc." Trans Wrench

This fits the little screws that hold the bearings in the idler gears in "RC10" transmissions. \$8.50.

RC 7059 Replacement .035 Tip \$4.50

RC 6004 .050 Pinion Set Screw Wrench

This wrench fits the 4/40 screws in "Trinity", "Magic Motorsports" and most other pinion gears, it also fits slot car gears and wheels. \$8.50.

X RC 6055 .050 Wrench Tips (1 pc.) \$4.50
RC 6005 .050 Wrench Tips (6 pc.) \$25.50

RC 7056 .063 Wrench

A hard wrench to find is the size that fits the battery cups on the "RC10". We have it and you would be surprised how many uses you will come across for this size wrench. \$8.50.

RC 7060 .063 Wrench Tip \$4.50

RC 7057 .093 Wrench

This is the size wrench that fits all the big 4/40 screws that are used in most car kits \$8.99

RC 7061 .093 Wrench Tip \$5.00

RC 7058 Metric Pinion Wrench

Fits Tamiya, and Kyosho pinions. \$8.50

RC 7063 Metric Pinion Tip \$4.50

RC 6032 2.5 mm Motor Wrench

All the motors produced for R/C cars use 3mm metric screws to mount them. This is the wrench size that fits these screws. The tip on this wrench is long to make it easier to reach around tires and shocks. \$8.99.

RC 7062 2.5 mm Wrench Tip \$5.00

X RC 7800 The Tool

Dual side purple anodized Allen wrench has a pinion Drill blank tip on one end and a 2.5 mm motor mounting screw tip on the other. \$19.99

X RC 7801 The Tool Too

Same as above but instead of a 2.5 mm screw tip we have substituted a .093 tip. \$19.99

SHIRTS

RC 9033 Slot Machine T Shirt (M)

Sharp looking T shirt with the "Slot Machine" logo on the front and "Monster Horsepower" on the back. \$15.00

RC 9034 Slot Machine T Shirt (L) \$15.00

RC 9035 Slot Machine T (XL) \$15.00

RC 9036 Slot Machine T (XXL) \$17.50



RC 9100 Trinity Designer T Shirt



RC 9030P Trinity Logo Hauler Bag, Pink



RC 9032 Trinity Transmitter Bag



9224 The Green Machine

RC 9100 Trinity Team T Shirt (M)	\$15.00
RC 9101 Trinity Team T Shirt (L)	\$15.00
RC 9102 Trinity Team T (XL)	\$15.00
RC 9103 Trinity Team T (XXL)	\$17.50

Banners

RC 9005 Team Trinity Banner	\$15.00
-----------------------------	---------

STICKERS

RC 9000 White Trinity Stickers	\$3.00
RC 9001 Black Trinity Stickers	\$3.00
RC 9014 Green Fluorescent	\$3.00
RC 9016 Pink Fluorescent	\$3.00

HAULER AND TRANS BAGS

RC 9030P Trinity Logo Hauler Bag

Fluorescent pink hauler bag with black "Trinity" logo and trim. The perfect way to carry your cars and radios, or look in style at the beach! \$39.99

X RC 9030G Trinity Logo Hauler Bag

Fluorescent green hauler bag with black "Trinity" logo and trim. \$39.99

RC 9032 Trinity Logo Transmitter Bag

Purple nylon bag for storing and carrying your transmitter. From personal use we have found this case also works great for 8mm cameras and pullout car stereo's, even your lunch! This will fit your stereo and a "Passport" radar detector will fit in the inside pocket. \$19.99

New Item **X**

Winter 1993
Trinity
Speedworks And
Magic Motorsports
Catalog.

This is our latest catalog, please throw out all other catalogs and price sheets!

Speedworks

X ROAR LEGAL STOCK MOTORS

9224 The Green Machine™

ROAR 1991 and NORRCA legal short stack stock motor. New armature design lets us use less wire but still meet legal specs, combined with our new winding pattern which places the wire closer to the center of the core, producing a quicker revving, higher torque stock motor for shorter tracks. 5.0 Wet magnets, 27 turns, 24° timing, commutator lock, 25,600 rpm's. \$28.00

OUTLAW STOCK MOTORS

0450 Joel Johnson™ Stock Part 2

The most popular stock motor of all time is now faster than ever. This second coming of the "Johnson Stock" features our new "Split Rotor Slot Armature" which decreases the internal resistance thus producing a higher revving, more powerful armature. When you combine this with 45 degrees of timing, you have the fastest stock motor around. Legal for all events run under the ROAR '90 motor rules, or simply when you want to do some serious street racing. 4.9 Wet magnets, 45° timing, 27 turns, 28,000 rpm's. \$28.00

0777 Ground Zero™

Super fast outlaw stock motor. 15 turns for awesome top ends. The fastest Speedworks "Outlaw Stock" motor. 15 turn single, 32,000 rpm's. \$28.00

0004 Dirt Oval Stock Motor

Although not ROAR legal this "stock" motor and our 0005 "Super Speedway Stock" are widely used by hobby shops and clubs for their legal motors. These motor have less turns but much less timing which makes them as fast as the ROAR '90 legal stocks but with a much longer life. The lower timing keeps the brushes for arching on the commutator, which builds up tremendous amounts of heat and is the reason of so many stock motor failures. This motor works excellent with off-road cars. 24 turns, 25,200 rpm's. \$28.00

0005 Super Speedway Stock Motor

The original "Outlaw Stock Motor! Low timing keeps the brush wear to a minimum but the low turn armature really turns a lot of rpm's. 23 turn single, 27,000 rpm's. \$28.00



9200 Speed Gems Topaz



9201 Speed Gems Ruby



9202 Speed Gems Sapphire



9203 Speed Gems Diamond

MARINE STOCK MOTORS**0445 Monster Marine**

The first in the line of Speedworks boat motors. This stock motor was designed especially for electric boats like the "MRP Hydro". New 4.9 Wet magnets, high temperature composite endbell and oilite bushings. Factory set timing. 4.9 Wet magnets, 24 turn single, 26,300 rpm's \$28.00

MODIFIED MOTORS, Speed Gems™

The Speed Gems series of professional racing motors was designed from the ground up to be the fastest and most powerful machine wound modified motors you can buy. Designed by our race team to work best with the new Sanyo and Panasonic 1700 mAh batteries, and today's technology in car design. Hand built and hand picked performance for 1/2 the cost. These motors will pave the way of modified motor design into the year 2000.

X 9200 Topaz™

An excellent wind for oval and on-road racing in the Evolution 10, 10LSS and Lynx II SS cars. This modified motor has 4.95 Wet magnets, dual ball bearings, adjustable timing and high performance springs and brushes. Works the best with Panasonic or Sanyo brand 1700 mAh cells. Dual ball bearings, 11 turn triple wind, 22.5 awg, 50,000 rpm's. \$45.00

X 9201 Ruby™

For 2wd off road cars like the Associated RC10's, Losi JRX cars and Traxxas, we have come up with a 16 turn triple motor that has lots of top speed but a controllable mid range. Works with either Sanyo 1400 or 1700 SCR's or the Panasonic P-170's. 4.95 Wet magnets, Dual ball bearings, 16 turn triple wind, 23.5 awg, 46,000 rpm's. \$45.00

X 9202 Sapphire™

The RC10T, Losi LXT and Traxxas Hawk 2 racing trucks require a lot of low end torque to turn those big tires and the Sapphire's single wind will produce just that. Just about any battery pack will provide good results as this motor is easy on batteries. Dual ball bearings, 4.95 Wet magnets, 17 turn single wind, 18.5 awg wire, 45,000 rpm's. \$45.00

X 9203 Diamond™

Lots of punch and top speed are produced by the Diamond. This is an excellent all around motor that really excels in 4wd off road cars like the Yokomo YZ10 and Kyosho Lazer or on dirt oval with the ReFlex 10. 1700 mAh batteries are required for the best results. 4.95 Wet magnets, Dual ball bearings, 12 turn double wind, 19.5 awg, 49,000 rpm's. \$45.00

MODIFIED MOTORS, Speedworks**0333 Oval Man™**

Machine wound Tri-Rotor™ armature for the rpm demands of oval racing. Tri-Rotor armature design gives more rpm's with out a loss of low end torque. Excellent for dirt and pavement oval racing. 4.9 Wet magnets, dual ball bearings, 13 turn double wind, 45,100 rpm's. \$45.00

0446 Chris Doseck World Championship

This modified motor is a favorite motor of a lot of drivers. It has a very strong power band and works especially well for on-road racing when geared way up and "throttle driven". Good for 4 and 8 minute racing on-road or 4 minute oval. 4.9 Wet magnets, dual ball bearings, 13 turn triple multiwire, 43,200 rpm's. \$45.00

0555 Tony Neisinger™ Signature

This motor was designed for really well hooked up 2wd off-road cars although like any modified motor it can be run in any car as long as the gearing is correct and you have the correct capacity batteries to make the run time. 4.9 Wet magnets, dual ball bearings. 14 turn quad wind, 41,000 rpm's. \$45.00

MODIFIED MOTORS, Dual Motor Fun Trucks**0008 Monster Mash!™**

The Monster Mash! and Monster Mash2 were designed for the dual motored trucks like the Clodbuster and USA 1 and Bull Head. Lots of torque and raw power. Great for racing or for simply doing some serious high speed street cruising. 4.9 Wet magnets, dual ball bearings, 16 turn single wind, 40,000 rpm's. \$45.00

0009 Monster Mash 2™

Same as above but turns in a reverse rotation, for the above mentioned trucks. \$45.00

BRUSHES**0430 Speed Brush™**

Dual shunted soft compound motor brush produces high rpm's. Works great in stock motors. \$3.50

ELECTRICAL**0010 1500 mAh Sport Battery Pack**

6 cell assembled sport battery pack made out of the new Sanyo 1500 mAh cells. Comes with "Tamiya" type plug installed and 4 color fluorescent sticker. \$24.99



0333 Oval Man



0446 Chrs Doseck World Championship Edition



0555 Tony Neisinger Signature



0420L Speedworks T Shirt

0014 Dropping Resistors W/Clips

2, 30 ohm dropping resistors with alligator clips for slowly discharging your battery pack between runs. \$3.50

0432 Long Range Antenna

Extra long 16" flexible antenna with a chassis and vertical mount base. \$2.50

0434 Radio Chips

20 pieces of super stick servo tape cut into the perfect size squares for attaching servos speed controllers and receivers. \$2.99

TIE WRAPS

0672 Fluorescent Tie Wraps (16 pcs)

8" fluorescent tie wraps in various colors. \$2.49

0677 Mini Fluorescent Tie Wraps (25 pcs)

4" tie wraps. \$2.59

SHIRTS

0420M Speedworks Racing Shirt

The most radical looking T shirt in RC. 4 Fluorescent colors with the Speedworks lettering in black puff lettering. \$15.00

0420L Speedworks Racing Shirt \$15.00

0420XL Speedworks T Shirt \$15.00

0420XXL Speedworks T Shirt \$17.50

BANNERS

0425 Speedworks Banner

Full color banner. \$12.00

Magic Motorsports

BALL BEARINGS

All "Magic" bearings are non-rusting stainless steel and are packaged 1 per bag unless otherwise specified.

MM802 3/16 x 5/16 Unflanged

Fits "RC10" transmission. \$6.00

MM803 1/4 x 3/8 Unflanged

Fits inside of gear on pro-diffs. \$6.00

MM804 1/8 x 5/16 Flanged

Fits 1/12th front wheels. \$6.00

MM805 1/4 x 3/8 Flanged

Fits rear axles on the "RC10" and 1/10th on-road cars. \$7.00

MM806 3/16 x 5/16 Flanged

Fits "Lynx II" front wheels. \$7.00

MM816 3/16 x 3/8 Unflanged

Fits new 3 piece "RC10" front wheels and "Jrx-Pro" front wheels. \$9.99 pair

MM830 3/16 x 5/16 Unflanged

Losi Slipper Bearing. \$4.95

MM832 3/8" x 5/8" Unflanged

Associated outdrive. \$7.95

MM833 4 x 8 x 3 MM \$3.95

MM834 4 x 8 x 3 MM Flanged \$4.95

MM835 5 x 8 x 2.5 MM

Small Blackfoot \$6.95

MM836 5 x 8 MM Unflanged \$6.95

MM837 5 x 8 MM Flanged \$6.95

MM838 5 x 9 MM Unflanged \$4.95

MM839 5 x 9 MM Flanged \$4.95

MM840 5 x 10 MM Flanged \$4.95

MM841 5 x 10 MM Unflanged \$4.95

MM842 6 x 12 MM Unflanged \$4.49

MM843 7 x 11 MM Unflanged \$5.95

MM844 8 x 12 MM Unflanged \$4.75

MM845 8 x 14 MM Unflanged \$4.99

MM847 8 x 16 MM Unflanged \$5.99

MM848 10 x 15 MM Unflanged \$6.99

BATTERY & ELECTRICAL

MM210 Matched Clodbuster Pack

6 cell 4400mAh split pack, prewired with "Tamiya" style connectors. \$99.99

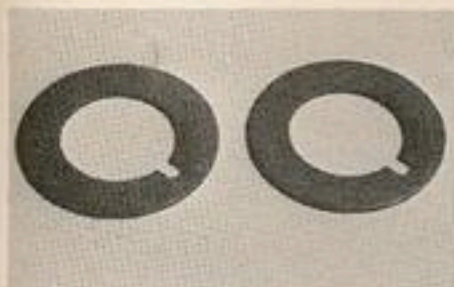
MM313 Pink Stick Pack Shrink Wrap

2.5 inch fluorescent pink shrink pack for covering 6 cell stick packs. \$2.99

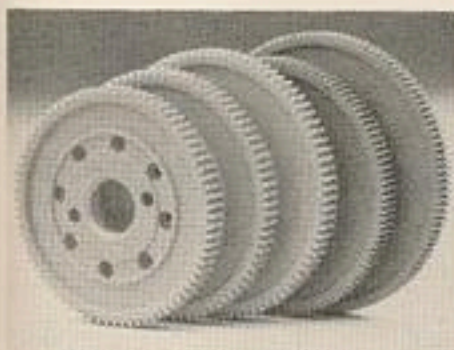
CHASSIS ACCESSORIES

MM504 10L-12L Heatsink Motor Mount

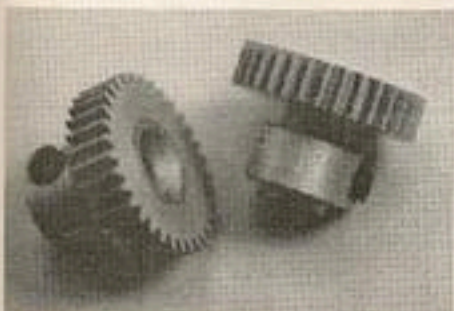
Purple anodized aluminum heatsink motor mount keeps your motor cooler running. \$39.99



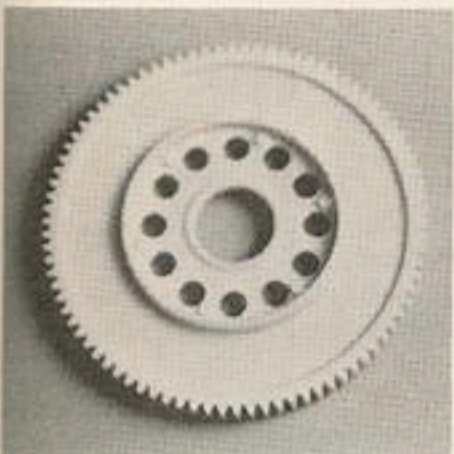
MM600 Notched Hardened Diff Rings



All Purpose Ste*lth Spur Gears



Zero Gravity Hardened Aluminum Pinions



Magic Spur Gear Shown W/Without Diff Ring

MM509 Lynx II Heat Sink Motor Mount

Purple anodized aluminum heatsink motor mount keeps your motor cooler running. \$39.99

MM508 1/12th Scale Light Weight Hub

Purple anodized aluminum left hand wheel hub for 1/12th scale cars. Drilled out to save weight. \$6.95

DIFFERENTIAL PARTS

MM600 Notched Differential Rings

Super hard perfectly flat differential rings for a better working diff. Fits "RC10" and all popular on-road cars. \$2.99

MM602 Best Balls

True carbide differential balls are the hardest and most round that you can buy. There is no need to replace these every run like other brands of balls. These are true carbide, not rehardened steel. Now with 16 pieces for Magic spurs. \$15.99

GEARS, Magic Spurs

The Magic spurs are designed to allow you to build your gears at home not at the track. Any standard diff ring snaps into place so you can put all the balls and lubricant in your diff, snap the other ring into place and put the gear in your box. No more lost balls. The design also shields the diff balls so less dirt gets into your differential. Fits all popular cars, that use standard diff rings (i.e. RC10, Lynx II, ReFlex 10, Evolution 10 10L, 12L etc). These are the most popular spur gears in RC today, also the best looking!

Magic 48 Pitch Spur Gears

MM078	78 Tooth Spur Gear	\$4.99
MM083	83 Tooth Spur Gear	\$4.99
MM086	86 Tooth Spur Gear	\$4.99
MM089	89 Tooth Spur Gear	\$4.99
MM092	92 Tooth Spur Gear	\$4.99
MM095	95 Tooth Spur Gear	\$4.99

Magic 64 Pitch Spur Gears

MM195	95 Tooth Spur Gear	\$4.99
MM100	100 Tooth Spur Gear	\$4.99
MM105	105 Tooth Spur Gear	\$4.99
MM110	110 Tooth Spur Gear	\$4.99
MM115	115 Tooth Spur Gear	\$4.99
MM120	120 Tooth Spur Gear	\$4.99
MM125	125 Tooth Spur Gear	\$4.99

GEARS, Ste*lth, All Purpose

These flat sided "Ste*lth" spur gears are designed to fit most cars and especially the "Associated Stealth" transmission. The tooth pattern has been designed for the best mesh and lowest possible drag. Our molding techniques assure that every gear is per-

fectly true and round and the composite material we use makes the teeth super strong. Fits RC10 Worlds, Lynx II, ReFlex 10, Evolution 10 10L, 12L etc).

Ste*lth 48 Pitch Spur Gears

X	MM778	78 Tooth Spur Gear	\$3.99
X	MM783	83 Tooth Spur Gear	\$3.99
X	MM786	86 Tooth Spur Gear	\$3.99
X	MM789	89 Tooth Spur Gear	\$3.99
X	MM792	92 Tooth Spur Gear	\$3.99
X	MM795	95 Tooth Spur Gear	\$3.99

Ste*lth 64 Pitch Spur Gears

X	MM790	95 Tooth Spur Gear	\$3.99
X	MM700	100 Tooth Spur Gear	\$3.99
X	MM705	105 Tooth Spur Gear	\$3.99
X	MM710	110 Tooth Spur Gear	\$3.99
X	MM715	115 Tooth Spur Gear	\$3.99
X	MM720	120 Tooth Spur Gear	\$3.99
X	MM725	125 Tooth Spur Gear	\$3.99

PINIONS, Zero Gravity™

The latest in power producing pinion gears, these pinions are top hobbed from 6061 T6 aircraft aluminum and meet or exceed A.G.M.A. 48 standards. Lightened and relieved at all non stress points for the lowest rotating mass. We use a proprietary aerospace coating which is extremely wear resistant, and it contains teflon for a very low coefficient of friction. All pinions will have the tooth size on the side of the shaft. Special narrow tooth web for less drag, especially when using Magic and Ste*lth spur gears. Available in all the popular sizes in both 48 and 64 pitch.

48 Pitch Zero Gravity Pinions

X	M4812	12 Tooth Pinion Gear	\$5.99
X	M4813	13 Tooth Pinion Gear	\$5.99
X	M4814	14 Tooth Pinion Gear	\$5.99
X	M4815	15 Tooth Pinion Gear	\$5.99
X	M4816	16 Tooth Pinion Gear	\$5.99
X	M4817	17 Tooth Pinion Gear	\$5.99
X	M4818	18 Tooth Pinion Gear	\$5.99
X	M4819	19 Tooth Pinion Gear	\$5.99
X	M4820	20 Tooth Pinion Gear	\$5.99
X	M4821	21 Tooth Pinion Gear	\$5.99
X	M4822	22 Tooth Pinion Gear	\$5.99
X	M4823	23 Tooth Pinion Gear	\$5.99
X	M4824	24 Tooth Pinion Gear	\$5.99
X	M4825	25 Tooth Pinion Gear	\$5.99
X	M4826	26 Tooth Pinion Gear	\$5.99
X	M4827	27 Tooth Pinion Gear	\$5.99
X	M4828	28 Tooth Pinion Gear	\$5.99
X	M4829	29 Tooth Pinion Gear	\$5.99
X	M4830	30 Tooth Pinion Gear	\$5.99

Magic!

motorsports
designed by
Joel "Magic" Johnson™

MM900 Magic Motorsports T Shirt

64 Pitch Zero Gravity Pinions			
X M6415	15 Tooth Pinion Gear	\$5.99	X M6430 30 Tooth Pinion Gear \$5.99
X M6416	16 Tooth Pinion Gear	\$5.99	X M6431 31 Tooth Pinion Gear \$5.99
X M6417	17 Tooth Pinion Gear	\$5.99	X M6432 32 Tooth Pinion Gear \$5.99
X M6418	18 Tooth Pinion Gear	\$5.99	X M6433 33 Tooth Pinion Gear \$5.99
X M6419	19 Tooth Pinion Gear	\$5.99	X M6434 34 Tooth Pinion Gear \$5.99
X M6420	20 Tooth Pinion Gear	\$5.99	X M6435 35 Tooth Pinion Gear \$5.99
X M6421	21 Tooth Pinion Gear	\$5.99	
X M6422	22 Tooth Pinion Gear	\$5.99	
X M6423	23 Tooth Pinion Gear	\$5.99	
X M6424	24 Tooth Pinion Gear	\$5.99	
X M6425	25 Tooth Pinion Gear	\$5.99	
X M6426	26 Tooth Pinion Gear	\$5.99	
X M6427	27 Tooth Pinion Gear	\$5.99	
X M6428	28 Tooth Pinion Gear	\$5.99	
X M6429	29 Tooth Pinion Gear	\$5.99	

Shirts

MM900 Magic Motorsports T Shirt (med.)

\$15.00

MM901 Magic Motorsports T Shirt (large)

\$15.00

MM902 Magic Motorsports T Shirt (x-l)

\$15.00

Speedworks 1993 Motor Chart

Part #	Name	Wind	Turns	Timing	Magnets	Bearings	Usage	RPM's x 1000								
								20	25	30	35	40	45	50	55	
ROAR '91 Stocks																
9224	The Green Machine™	S	27	24°	4.95	Wet No	Roar '91 stock	25,600								
Outlaw Stocks																
0450	Joel Johnson Part II™	S	27	45°	4.9	Wet No	Roar '90 stock	28,000								
0004	Super Speedway™	S	23	08°	4.9	Wet No	Outlaw stock	27,000								
0005	Dirt Oval Stock™	S	24	10°	4.9	Wet No	Outlaw stock	25,200								
0777	Ground Zero™	S	15	05°	4.9	Wet No	Outlaw stock	32,000								
Boat Motors																
0445	Monster Marine™	S	24	09°	4.9	Wet No	Replacement Stock	26,300								
0446	Modified Marine™	D	18	Adj.	4.9	Wet Yes	Larger electric boats	35,000								
Speed Gems Pro Modifieds																
9200	Topaz™	T	11	Adj.	4.95	Wet Yes	1/10th on-road	50,000								
9201	Ruby™	T	16	Adj.	4.95	Wet Yes	2wd off-road	46,000								
9202	Sapphire™	S	17	Adj.	4.95	Wet Yes	Racing trucks	45,000								
9203	Diamond™	D	12	Adj.	4.95	Wet Yes	4wd off -road, oval	49,000								
Speedworks Modifieds																
0333	Oval Man™	D	13	Adj.	4.9	Wet Yes	2wd, 1/10th oval	44,000								
0446	Chris Doseck Signature™	T	13	Adj.	4.9	Wet Yes	1/12-1/10th road	43,200								
0555	Tony Neisinger Signature™	Q	14	Adj.	4.9	Wet Yes	2wd off-road	41,000								
0008	Monster Mash!™	S	16	Adj.	4.9	Wet Yes	Monster truck	40,000								
0009	Monster mash 2™	S	16	Adj.	4.9	Wet Yes	2 motor trucks	40,000								

The Speedworks motors, like all stock and modified motors do not necessarily have to be used as their name applies. For instance a "Dirt Oval Stock" can be used in any vehicle. Performance will depend upon gearing, driving style and battery capacity. Remember when choosing a motor that the lower the number of turns, the quicker the motor but it requires a small pinion gear and will drain the battery pack faster. For motors below 15 turns we recommend using 1700 mAh battery packs and 1400 mAh battery packs for motors 15 turns and up.

new wave technology!



1993 Motor Chart

Part #	Name	Wind Turns	Timing	Magnets	Bearings	Usage	RPM's x 1000
ROAR 1991 Stocks							
2024	Slot Machine™	S	27	24°	4.9 Wet	No	25,000
NORRCA Stocks							
1000	Monster Stock Jr™	S	27	36°	4.9 Wet	No	26,100
Outlaw Stocks							
2099	Psychotic Reaction™	S	13	10°	4.9 Wet	No	35,000
Championship Series Modifieds							
1784	Nitro™	S	08	Adj.	4.95 Wet	Yes	56,000
1785	Nuclear™	S	09	Adj.	4.95 Wet	Yes	55,000
1786	Platinum™	Q	10	Adj.	4.95 Wet	Yes	52,800
1787	Pure Gold™	Qt	11	Adj.	4.95 Wet	Yes	51,000
1776	Joel's Worlds Wind™	6	12	Adj.	4.95 Wet	Yes	50,000
1779	Speed Metal™	T	12	Adj.	4.95 Wet	Yes	49,600
1788	Silver™	Q	13	Adj.	4.95 Wet	Yes	49,000
1781	Buzz Saw™	D	14	Adj.	4.95 Wet	Yes	48,600
1782	Armageddon™	Q	15	Adj.	4.95 Wet	Yes	47,000
1783	Classic™	Qt	16	Adj.	4.95 Wet	Yes	45,600
1784	Long Player™	D	18	Adj.	4.95 Wet	Yes	43,000
Tri-Rotor Series Modifieds							
3300	Tri-Rotor™ 9 Turn	S	09	Adj.	4.95 Wet	Yes	54,000
3390	Tri-Rotor™ 10 Turn	Q	10	Adj.	4.95 Wet	Yes	53,000
3391	Tri-Rotor™ 11 Turn	Qt	11	Adj.	4.95 Wet	Yes	52,500
3392	Tri-Rotor™ 12 Turn	T	12	Adj.	4.95 Wet	Yes	51,000
3393	Tri-Rotor™ 13 Turn	Qt	13	Adj.	4.95 Wet	Yes	49,000
3304	Tri-Rotor™ 14 Turn	D	14	Adj.	4.95 Wet	Yes	48,000
3332	Tri-Rotor™ 15 Turn	6	15	Adj.	4.95 Wet	Yes	46,700
3330	Tri-Rotor™ 16 Turn	Qd	16	Adj.	4.95 Wet	Yes	46,000
3333	Tri-Rotor™ 17 Turn	T	17	Adj.	4.95 Wet	Yes	45,100

The Ten Commandments of Winning

TRINITY[®]

ReFlex™ 10 Oval



Ten Reasons the Reflex 10 Oval is the Most Advanced Dirt Oval Car In The World

1. Only the ReFlex 10 has a totally enclosed, graphite, direct drive transmission for smooth, dirt-free operation.
2. The drivetrain is the lightest in oval racing, which puts more horsepower to the track where it belongs and gives longer battery life.
3. Both driveshafts are fabricated from an ultra-light graphite composite which gives drag-free suspension movement as well as less rotating mass and lower unsprung weight so the ReFlex 10 hooks-up on rough tracks much better than the competition.
4. Rear toe-in is adjustable to allow for fine-tuning the car to all track conditions. This makes the ReFlex much more versatile.
5. The rear-engine design increases weight transfer to the rear wheels under acceleration so the car is especially good on slippery tracks.
6. All suspension arms are machined from graphite composites, rather than being molded, as in cheaper cars, so they are nearly indestructible and have smoother movements.
7. The chassis and longitudinal stiffener are graphite which produces an extremely stiff assembly so suspension geometry is maintained even on rough tracks.
8. 18° steering blocks and kingpins eliminate front end push in high speed corners.
9. Adjusting the differential is easily done without disassembling the rear suspension, so suspension geometry which has been carefully fine-tuned can be maintained throughout the diff adjusting process.
10. The ReFlex 10 was designed to win by a winner himself...Jim Dieter, national ROAR and NORRCA champion.

Trinity Users Are Accustomed to Winning...The Reflex 10 Continues That Tradition

TRINITY

Trinity Products, Inc. 1901 E. Linden Ave. #8, Linden, NJ 07036
(908) 862-1705 • FAX (908) 862-6875

©1992, Trinity Products, Inc